



GMT MONTHLY MEMBERSHIP PROGRESS REPORT

Results as of: 6/30/2019

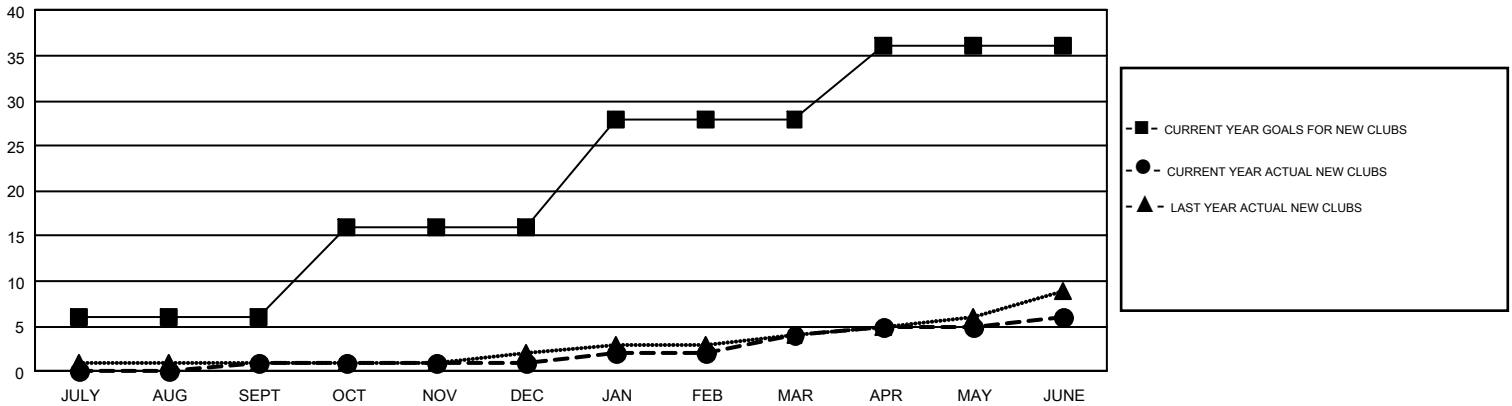
GMT Constitutional Area 1, Group C

GMT: STEVE ANTON

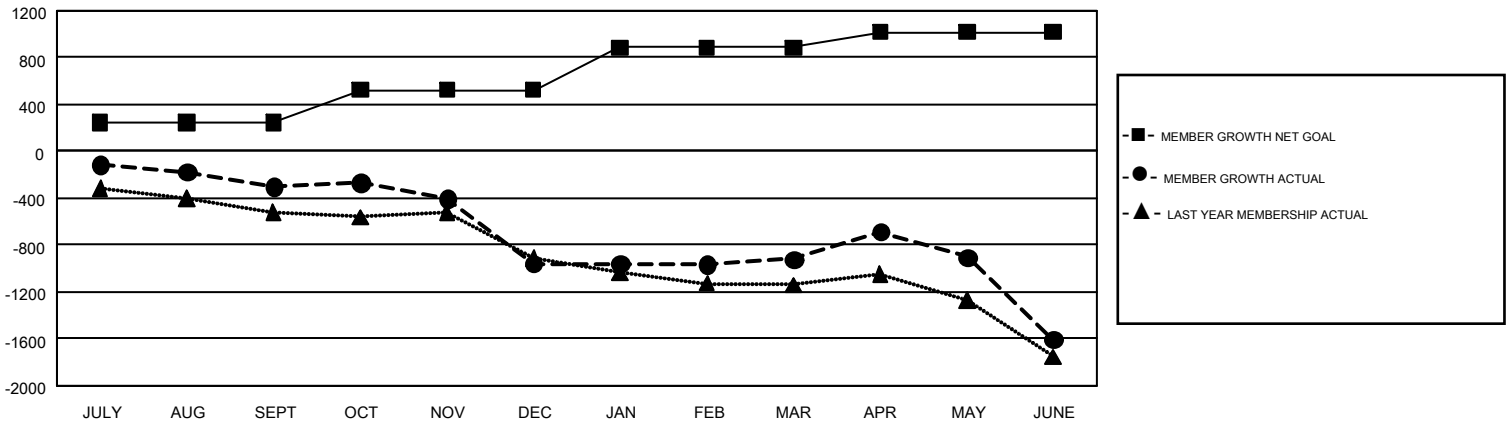
REPORT DOES NOT INCLUDE CLUBS IN UNDISTRICTED AREAS.

Clubs				Members			
RESULTS FOR 2018-2019				RESULTS FOR 2018-2019			
QUARTER	NEW CLUB GOAL	NEW CLUBS	DROPPED CLUBS	QUARTER	MEMBER GROWTH NET GOAL	MEMBER GROWTH ACTUAL	DROPPED MEMBERS ACTUAL (including transfers)
JULY/AUG/SEPT	6	1	7	JULY/AUG/SEPT	246	815	988
OCT/NOV/DEC	10	0	10	OCT/NOV/DEC	278	823	1,411
JAN/FEB/MAR	12	3	3	JAN/FEB/MAR	365	932	783
APR/MAY/JUNE	8	2	13	APR/MAY/JUNE	131	1,172	1,726

GOALS AND ACTUAL NEW CLUBS CUMULATIVE



GOALS AND ACTUAL MEMBERS CUMULATIVE



DROPPED CLUBS: 33	925 CLUBS OF 1,476 ADDED 1 OR MORE NEW MEMBERS	<u>GENDER DISTRIBUTION</u>
<u>DROPPED MEMBERS</u>	CLICK HERE FOR CUMULATIVE MEMBERSHIP DATA	MALE 27,807 (71.36%)
DECEASED 666		FEMALE 11,159 (28.64%)
CLUB CANCELLED 227		TOTAL FAMILY UNIT MEMBERS 7,301
OTHER 4,008		FAMILY MEMBERS PAYING HALF DUES 3,738
TOTAL 4,901		